

Get Your Department a Seat at the Planning Table

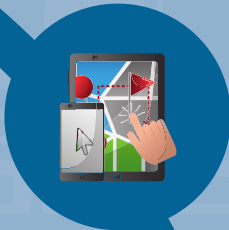
Follow this step-by-step approach

1.



Utilize different map layers, including any new proposed road network changes, to visually demonstrate the impact a proposed new commercial or housing development will have on your department's response capabilities.

2.



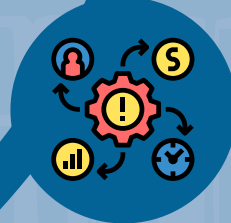
Geographically display areas within your city where a positive or negative change in response performance is projected based on the impacts of the new development, and easily export the projected response times to compare to your current response times.

3.



Simulate and compare different deployment scenarios, such as adding a new fire station, relocating an apparatus, or adding a new unit type, in order to best serve your community and help offset any potential negative impacts of the new development project, like an added workload or increase in response times.

4.



Prescriptively generate the most optimal deployment solution to accommodate the new development, as well as addressing day to-day operational challenges.

5.



Armed with science-backed data, confidently present and justify new budgetary needs to city planners and developers in order to continue to serve your community, with the resources and staff you need.

