

LIVEMUM IN THE DISPATCH CENTER



AND WHY IT'S A VALUE ADD FOR YOUR TEAM

1 YOUR BUSINESS RULES

LiveMUM accounts for the business rules and move-up preferences of every agency your communications center dispatches for.



2 OPTIMAL MOVE-UPS

LiveMUM composes optimal move-up solutions that account for cross-staffed units, for example, resolving both Engine and Ladder coverage gaps with a Quint relocation.



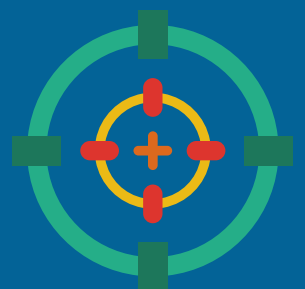
3 DYNAMIC TRAINING

LiveMUM displays move-up scenarios as they occurred in the field for the dynamic training of dispatchers and evaluation of your business rules.



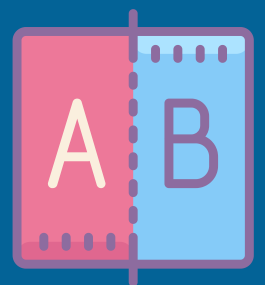
4 PRECISE ESTIMATES

LiveMUM provides precise estimates for the time it will take a unit to clear the hospital and be back in service based on your real, historical data.



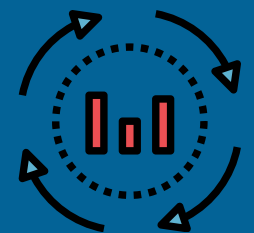
5 REAL-TIME EVALUATION

Using LiveMUM, dispatchers can suggest and evaluate their own move-up alternatives and compare the impact on coverage against a recommended move-up in real-time.



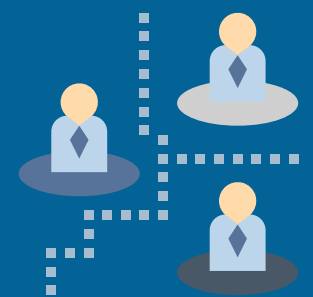
6 HISTORICALLY DRIVEN

LiveMUM enables a unit's relocation to be driven by the likelihood of a call occurring based on historical CAD data, rather than "gut feel".



7 PRE-DEFINED CONDITIONS AND SCENARIOS

LiveMUM permits the switching of dispatch rules to incorporate predefined conditions based on weather, community events, etc., and allows for disaster planning by simulating different deployment scenarios to meet coverage needs.



8 UNIT RELOCATION

LiveMUM provides unit relocation recommendations based on a multitude of factors such as the coverage of nearby units, the likelihood of an incident occurring in an uncovered area, and the expected return to availability.



9 STAFFING ACCURACY

LiveMUM evaluates the need for staffing changes based on seasonal or calendar changes, by recognizing the type of call volumes that will occur during a given period in time.



10 CAD INTEGRATION

With LiveMUM's CAD integration, LiveMUM actively and simultaneously monitors CAD activities, including unit AVL, unit status, active incident assignments and hospital wait times, taking into account their impact on move-up recommendations.

